

Example changing the Boot sequence in the Computers BIOS
from www.botfrei.de

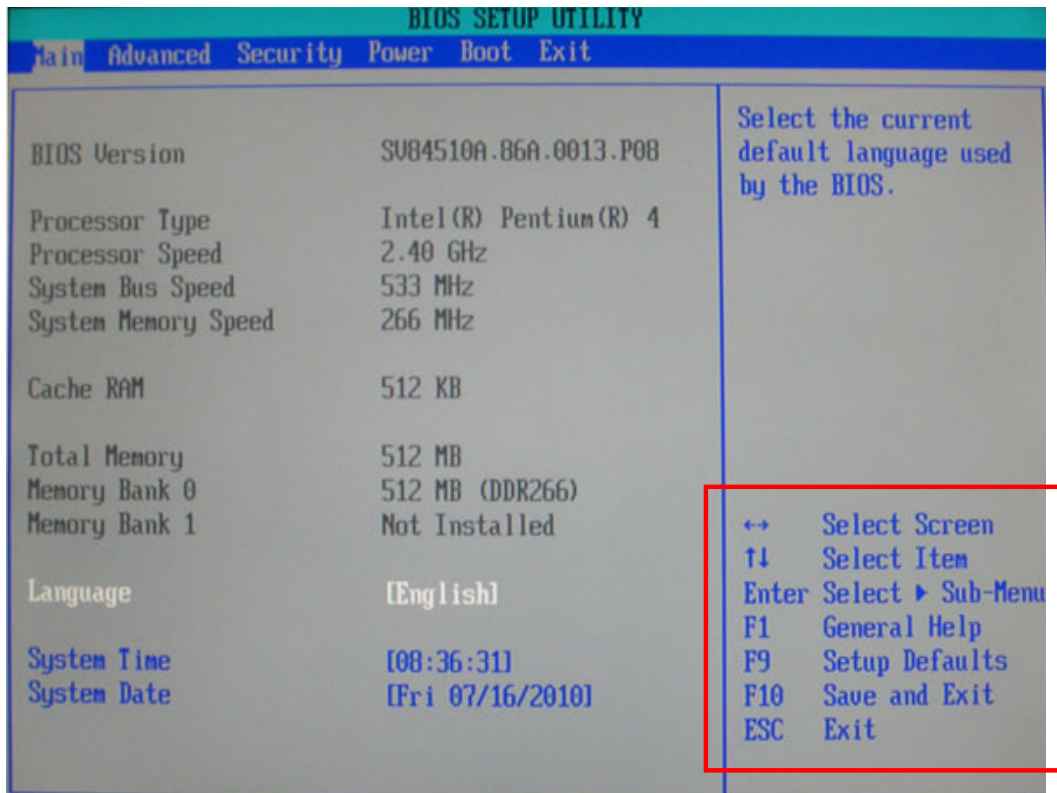
1.) Start your computer with the casing power button, press the „DEL“ key after it starts or i.e. (F2, F10...).



Pic. 1

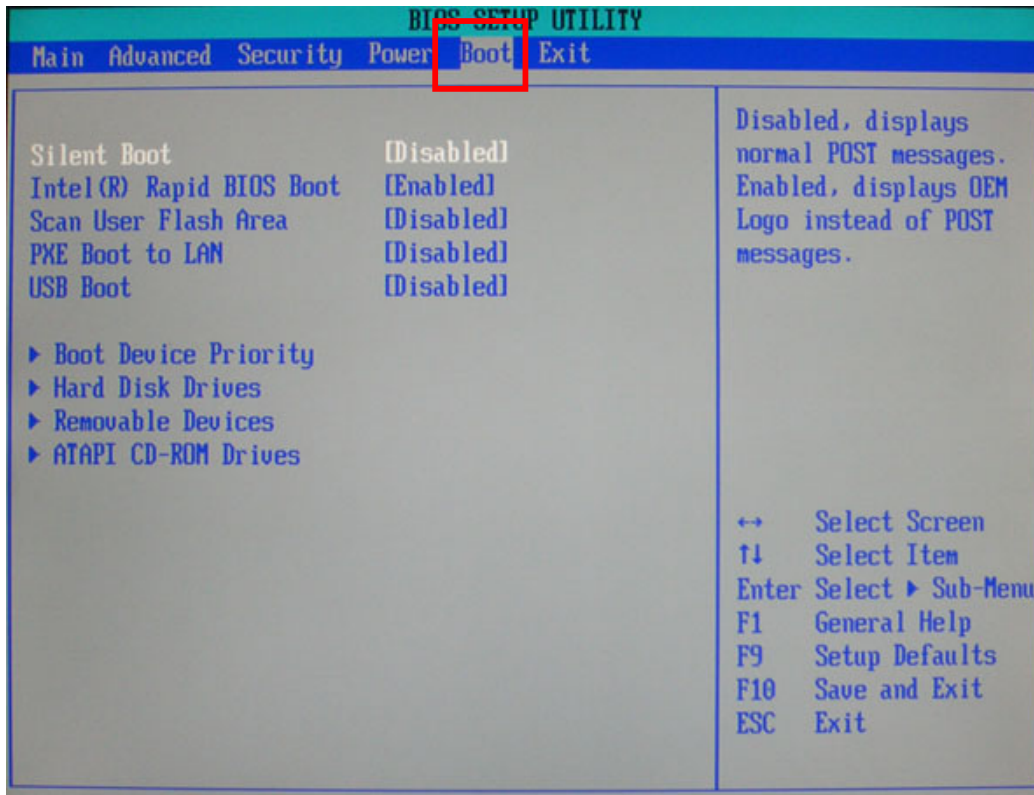
2.) If you hit the right key, you will see the computer BIOS settings ((see Pic. 2).

In the right pane you will see the current key settings, now you can move within the BIOS (red box).



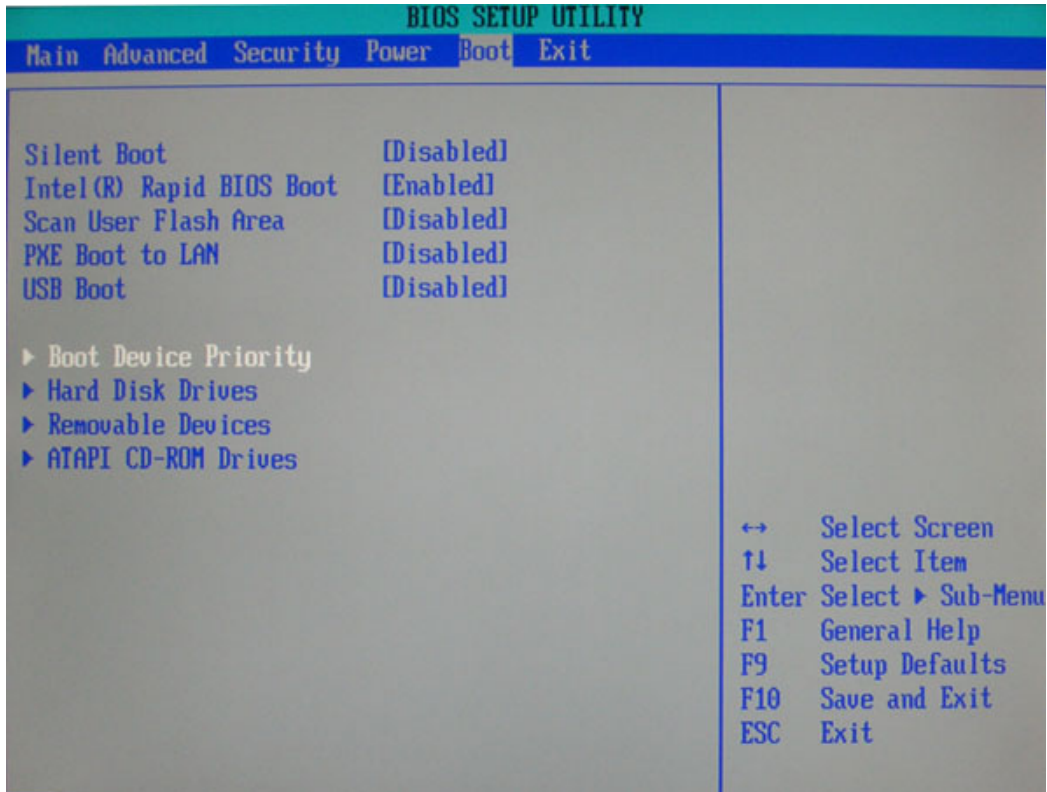
Pic. 2

3.) As you can see in our example (Pic.3), move with the cursor key to the **Boot** tab. You can now change the boot sequence settings.



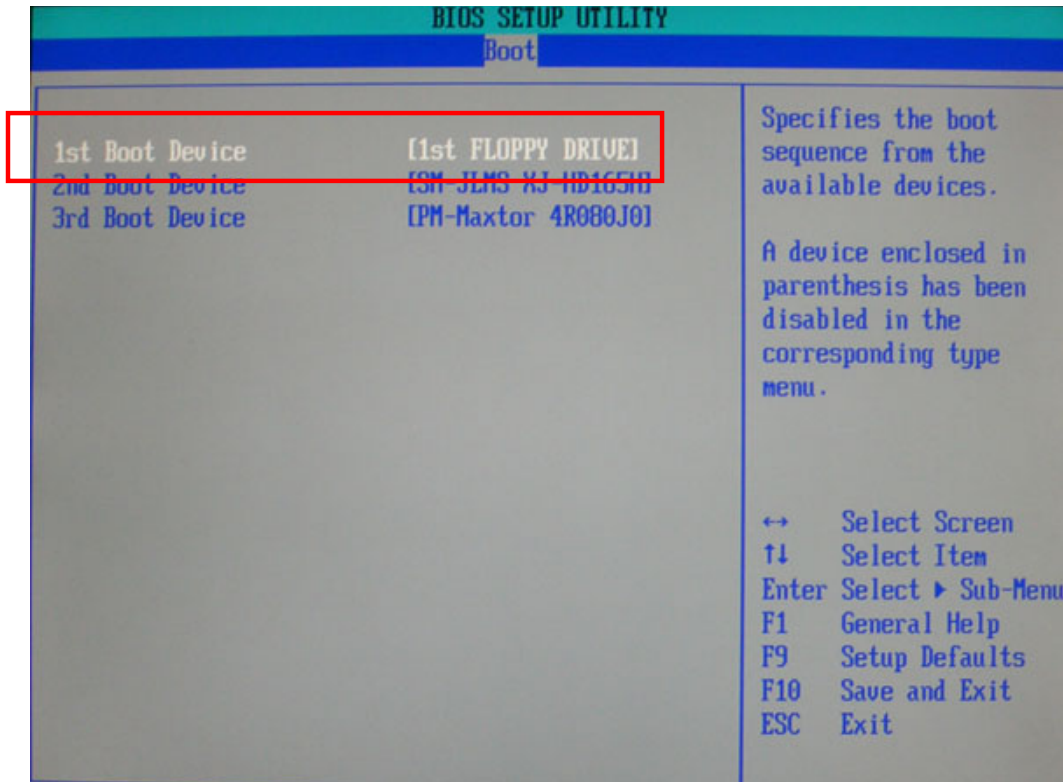
Pic. 3

4.) Move with the down cursor key to „**Boot Device Priority**“ and press the „**Enter**“ Key.



Pic. 4

5.) Now you will find the setting „1st Boot Device“, shown here (Pic.5) set to **Floppy Drive**.
Press „Enter“



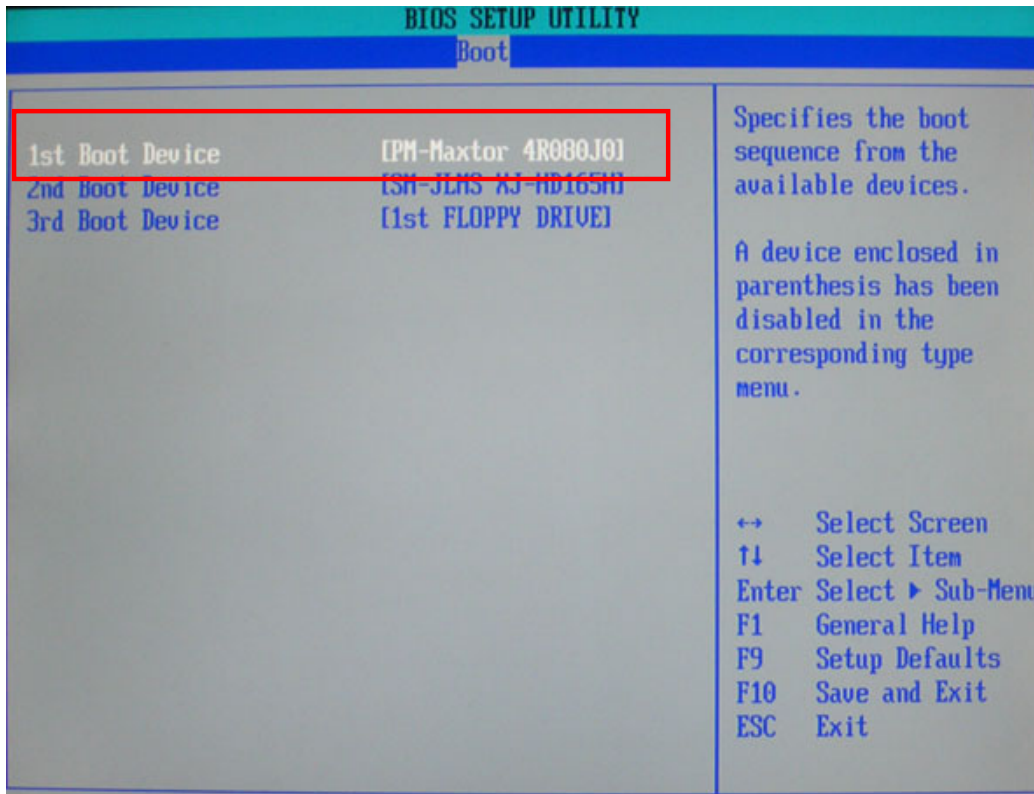
Pic. 5

6.) A window will appear with a list of devices, you can select a device with the „up – and down key“. In our example select the **CD/DVD – Drive (the device from Maxtor)** and confirm with „Enter“.



Pic. 6

7.) After confirming with the „Enter Key“ the device will be the new „1st Boot Device“ (Pic.7).
Now save with the „F10- key“

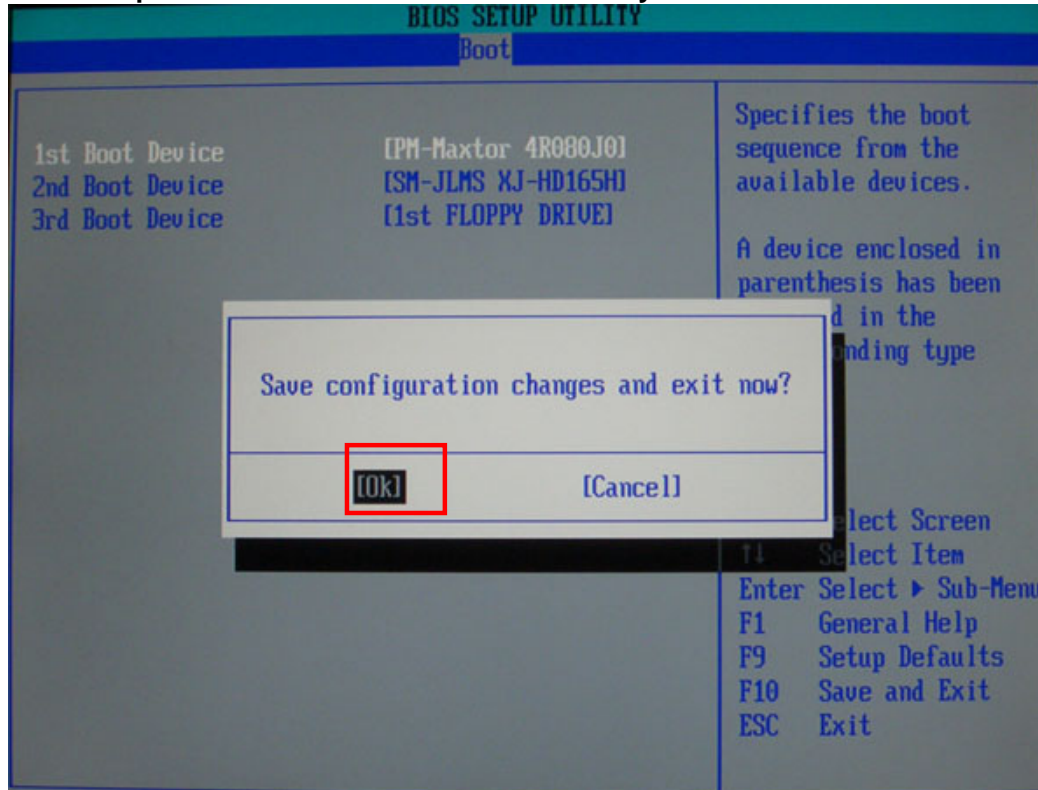


Pic. 7

8.) A window will appear (Pic.8), asking whether you want to save these settings.

You can swap with the right – left cursor key between „Ok“ and „Cancel“ select, „Ok“

Your computer will now reboot and automatically start from the Boot-CD!!!



Pic. 8

Info:

This to-do instructions is an example from our computer. There are different BIOS vendors available which have different settings and menus. Please read the appropriate manual which coincides with your computer BIOS.

You can get further details at BIOS Settings on the Internet. Please read

[\(http://pcsupport.about.com/od/fixtheproblem/htaccessbios.htm/\)](http://pcsupport.about.com/od/fixtheproblem/htaccessbios.htm/)



1. Preperation for changing the Boot sequence

- Close all programs, shutdown windows and restart : Start ==> Shutdown ==> Restart

- After a restart you will be shown with which key or key combination pointing you to the BIOS configuration. If this is displayed too fast, then you can stop the routine by hitting the "Pause" key. **Try the DEL or F2- key. Other well known keys are F1, F10, ESC, Strg+Alt+S oder Strg+Alt+A.** Other recommendations are entering many key combinations which provokes an error, thereby still being able to enter the BIOS configuration menus.

2. Temporarily Changing the Boot Sequence

A few new BIOS versions offer their own (Function) keys, often F12, hence, a one-time change the boot sequence for the next time you boot. This is of course ideal if you do not want to boot from your hard drive, but rather from a boot capable CD. Because you do not have to worry about changing back to a permanently set boot sequence.

3. Example (changing the Boot Sequence old AWARD BIOS)

- With the cursor down BIOS FEATURES SETUP: with: ENTER
- select BOOT SEQUENCE
- With the Page- down - or Page- up- keys you can select the preferred Boot sequence:
To boot from CD: CDROM, A,C
For a normal Start: C,A,....
- With ESC key back into the main BIOS menu
- Either with F10 or via the menu "SAVE & EXIT SETUP" saving the new Boot sequence.
- ==> SAVE to CMOS and EXIT (Y/N)
- With a German keyboard: press Z; changed to y
- With the English keyboard: press y (for "yes").

General Access BIOS Setup Possibilities				
AMI	Entf		F1	
Award	Del	Strg + Alt + ESC	Strg + Alt + S	F2
Phoenix	Del	Strg + Alt + S	Strg + Alt + ESC	F2
Further combinations	Strg + Enter	Alt + Strg + F1	Alt + Enter	F10
	Alt + F1	Strg + Alt + Einf	Sometimes also the Space key	

These Key or Key combinations what are used in a BIOS			
Function	A.M.I.-BIOS	Award-BIOS	Phoenix-BIOS
Move	←↑→↓	←↑→↓	←↑→↓
Menu selection	Enter	Enter	Enter
Scroll through Options	Bild↑,Bild↓ oder ←↑→↓	Bild↑,Bild↓ oder ←↑→↓	Bild↑,Bild↓ oder ←↑→↓
Select device in the Boot sequence	PU/PD	+ / -	
Leave the setup	Esc	Esc	Esc
Saving the settings and leave the setup	F10	F10	F10
Restore the previous CMOS-values out of CMOS	F5	F5	F5
BIOS load default settings (minimum configuration)	F6	F6	F6
SETUP load default settings laden (optimum configuration)	F7	F7	F7
Setup screen-colours		Umschalt-F2	
Help	F1	F1	F1

Bios-Compendium

(<http://pcsupport.about.com/od/fixtheproblem/htaccessbios.htm/>)